

**DO TALK WRITE LTD**

# **Health and Safety Policy and Procedures**

***Updated September 2025***



This page is intentionally blank.

## Contents

### General Policy

A declaration of our intent to provide and maintain, so far as is reasonably practicable, a safe and healthy working environment and to enlist the support of our employees in achieving these goals.

### Organisation and Responsibilities

This section sets out the health and safety responsibilities of key personnel within the organisation.

### Safety Arrangements

This section explains the systems and procedures that will be used to form the basis of our health and safety regime.

### Safety Records (this section may be in a separate folder)

This section contains;

- An Annual Review of our Health and Safety System and Procedures.
- Periodic Checklists created specifically for individual roles and responsibilities.
- A comprehensive source of records relating to statutory examination periodic inspection and testing of the work equipment and installations used by our organisation.
- Records for Fire Safety Management.
- A system for keeping health and safety training records.
- A section for accident and incident reporting, and investigation.

## Health and Safety Policy

### General Policy

This Health and Safety Policy contains a plan detailing how we manage our health and safety issues. The policy sets out our commitment to manage risks and provide good standards of health and safety and also to meet our legal duties. Health and safety is an integral part of how we do business as a responsible employer and we have put in place the necessary organisation and arrangements to achieve this. This policy has been prepared after a full appraisal of our health, safety and welfare requirements and will be reviewed periodically (at least annually).

### Health and Safety General Policy Statement

This is a declaration of our intent to provide and maintain, so far as is reasonably practicable, a safe and healthy working environment and to enlist the support of employees towards achieving these goals. The General Policy statement is brought to the attention of all employees by publication in the main policy manual and in the Employee Safety Handbook. It may also be included on notice boards in our premises.

### Organisation

This part of the Policy details the health and safety responsibilities of key personnel within our organisation. These responsibilities are fulfilled by completion of various Safety Records, pro-formas and records in relation to on-going maintenance activities, training, accident reporting, and investigation, and actions that have taken place.

### Relevant legislation

This page sets out details of the main statutes and regulations affecting health and safety at work that are currently in force.

### Safety Arrangements

This part of the Policy explains the systems and procedures in place for managing individual topics or subjects for which our business is responsible.

**To assist us with our duty we have retained Peninsula to provide information and guidance on how these provisions should be managed and recorded.**

**We accept that we cannot transfer our responsibility for managing health, safety and welfare within the workplace to others outside our employ. Use of the above documents will aid our success in fulfilling these responsibilities.**

# DO TALK WRITE LTD

## Health and Safety General Policy Statement

DO TALK WRITE LTD recognises that it has responsibilities for the health and safety of our workforce whilst at work and others who could be affected by our work activities. We will assess the hazards and risks faced by our workforce in the course of their work and take action to control those risks to an acceptable, tolerable level.

Our managers and supervisors are made aware of their responsibilities and required to take all reasonable precautions to ensure the safety, health and welfare of our workforce and anyone else likely to be affected by the operation of our business.

This business intends meeting its legal obligations by providing and maintaining a safe and healthy working environment so far as is reasonably practicable. This will be achieved by;

- providing leadership and adequate control of identified health and safety risks;
- consulting with our employees on matters affecting their health and safety;
- providing and maintaining safe plant and equipment;
- ensuring the safe handling and use of substances;
- providing information, instruction, training where necessary for our workforce, taking account of any who do not have English as a first language;
- ensuring that all workers are competent to do their work, and giving them appropriate training;
- preventing accidents and cases of work related ill health;
- actively managing and supervising health and safety at work;
- having access to competent advice;
- aiming for continuous improvement in our health and safety performance and management through regular (at least annual) review and revision of this policy; and
- the provision of the resource, financial and other, required to make this policy and our health and safety arrangements effective.

We also recognise;

- our duty to co-operate and work with other employers when we work at premises or sites under their control to ensure the continued health and safety of all those at work; and
- our duty to co-operate and work with other employers and their workers, when their workers come onto our premises or sites to do work for us, to ensure the health and safety of everyone at work.

To help achieve our objectives and ensure our employees recognise their duties under health and safety legislation whilst at work, we will also remind them of their duty to take reasonable care for themselves and for others who might be affected by their activities. These duties are explained on first employment at induction and also set out in an Employee Safety Handbook, given to each employee, which sets out their duties and includes our specific health and safety rules.

Signature ..... Date .....

Position ..... .

## Record of Periodic Review of our Health and Safety Policy

Our Health and Safety General Policy Statement and Safety Arrangements are reviewed periodically. This is a record of these periodic reviews we have undertaken. Our Peninsula Health and Safety Consultant will also review our system and documentation during their routine visits to ensure that they meet current statutory requirements and good practice relevant to our business.

DATE	NAME OF REVIEWER(S)	OUTCOME (State – No change required or explain any required changes)	Where changes are required call our Advice Service, 0844 892 2785, and record here the date of your call

This record should be endorsed by anyone (including Health and Safety Consultants) who carries out the periodic review

For Consultant use

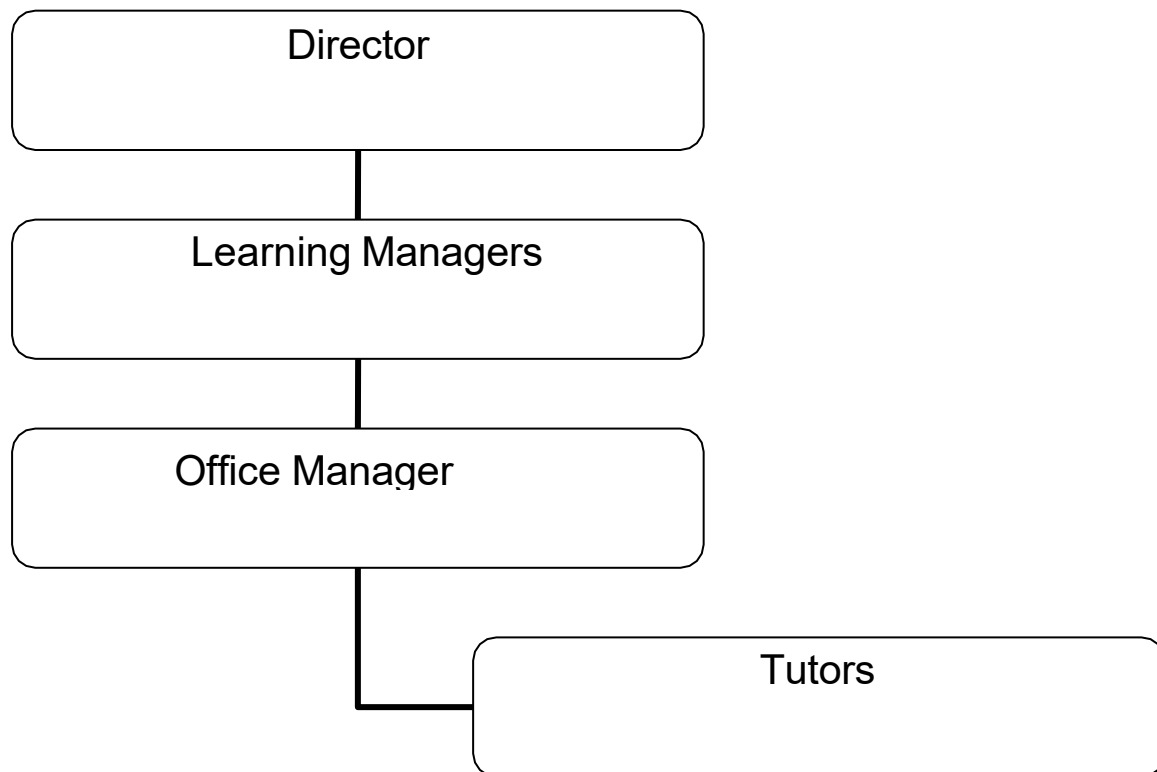
--	--	--	--	--	--

## Organisation

### Health and Safety Management Structure

Although the Director has overall responsibility for the implementation of this policy day to day responsibility for specific issues has been delegated to key personnel.

The management structure within our business is shown here and the a location of day to day responsibility for specific health and safety issues is shown in the Responsibility Chart which appears later in this document.



## Health and Safety Management Responsibilities

The Director has recognised that they retain overall responsibility for health and safety matters. They also recognise that the business needs to take action in respect of the key points listed here. In managing these matters emphasis is placed on managers and supervisors for recognising hazards and potential risks and then taking steps to minimise their effects on employees and others.

### General

- Provide and resource an effective health and safety management system.
- Make arrangements to consult with employees on health and safety matters.
- Arrange and maintain appropriate Employers' Liability Insurance cover.
- Ensure that health and safety implications are considered when acquiring new equipment and machinery.
- Ensure that contractors (when used) are competent and monitored during work.
- Ensure that a process is in place to identify and report hazards.
- Ensure that all employees receive appropriate health and safety training.
- Provide measures to protect the health and safety of employees working alone.
- Monitor the health and safety performance of the organisation.

### Occupational Health

- Ensure that adequate procedures are in place to identify and address occupational health risks.
- Ensure that the measures required to reduce and control employees' exposure to occupational health risks are in place and used.
- Implement measures to reduce stress within the workplace.

### Accidents, Incidents and First Aid

- Record accidents and incidents.
- Complete accident and incident investigations, identify causes and measures for prevention.
- Ensure that applicable injuries, diseases and dangerous occurrences are reported to the Enforcing Authority.
- Ensure that adequate first aid arrangements are in place.

### Fire and Emergency Arrangements

Ensure that;

- Adequate arrangements are in place to deal with fire safety at our premises or at our member's premises.
- Employees are aware of the fire and evacuation arrangements and other emergency procedures.
- Emergency equipment is provided, tested and maintained appropriately.
- Adequate Fire Risk Assessments are completed.



## Risk Assessment

Ensure that;

- Risk assessments are complete and Safe Systems of Work are produced for all activities that pose a significant risk of harm.
- Risk assessments are documented.
- The outcomes of risk assessments are carefully explained to the workforce.

## Premises

- Provide a suitable and safe working environment for employees with adequate welfare facilities.
- Ensure that the fixed electrical installation is adequately installed and maintained.
- Introduce and maintain measures to control and manage the risks from asbestos.
- Ensure good housekeeping standards are instigated and maintained.
- Provide suitable and sufficient maintenance of the facilities provided within the workplace.

## Equipment

Ensure that;

- All equipment provided by the organisation is suitable and properly used.
- All work equipment is adequately maintained and safe.
- Portable electrical appliances are adequately maintained, inspected and tested.
- Appropriate hand tools are provided and maintained.
- Any Personal Protective Equipment (PPE) provided gives suitable protection, is used and that employees are given information, instruction and training on its use.

## Substances

Ensure that;

- All substances are used safely.
- All substances are appropriately stored.

## Managers and supervisors

In addition to their general responsibilities for health and safety the Responsibility Table, shown later, sets out specific delegated health and safety responsibilities and identifies the managers and supervisors they are allocated to. They should refer to the associated Safety Arrangements, set out later, for further detail about those responsibilities..

## Employee and workers' responsibilities.

Our policy takes account of the specific statutory duties placed on people to take care for their own health and safety whilst at work and for that of others. Specifically we expect employees to;

- Ensure that company policies and procedures are read, understood and followed at all times.
- Ensure that isolation and lockdown procedures are followed at all times.

- Follow booking on and off site procedures at all sites (including head office).
- Take reasonable care for their health and safety and the safety of others whilst at work.
- Not intentionally or recklessly interfere with or misuse anything required by law or provided by the company in the interests of health and safety.
- Visually inspect tools, PPE and equipment prior to use.
- Ensure that PPE, tools and equipment are maintained, used and stored in accordance with manufacturer documentation.
- Follow all safety instructions and guidance when using equipment
- Report any Good Catches, incidents, accidents and non-conformances to the H&S manager.
- Contribute to the promotion of health and safety in the workplace
- Follow all written safe systems of work (SSOW) including method statements, risk assessments, COSHH data, permits to work etc. and their requirements.
- Follow the safety instructions of senior management.
- Ensure that they do not use tools and equipment unless they have been formally trained and are competent to do so.
- Comply with legislation, Approved Codes of Practice and guidance notes.
- Ensure all company vehicles are driven in a safe and suitable manner, and that the vehicle is left secure when not in use.
- Consult on health and safety matters and investigations to ensure a safe working environment is established.
- Seek advice from management on any issues relating to health and safety at work.
- Obey all site safety signs, general site rules and arrangements.

## Monitoring

The operation of this policy and arrangements is actively monitored through the periodic review of our completed Safety Record Forms and also by using Periodic Workplace Checklists. The Director has overall responsibility for this, but some of the routine tasks may be delegated. We also use an Annual Health and Safety Review form to determine whether our existing health and safety procedures and arrangements are adequate.

People who have delegated responsibilities under this policy will also complete Periodic Checklists of compliance with the policy and procedures arranging for remedial actions to be taken where necessary. The outcomes of these periodic reviews will also be taken into account during the annual review.

Monitoring and review help us to check the effectiveness of our Safety Management System.

## Responsibility Table

*This Responsibility Table shows the allocation of responsibility for particular health and safety issues to named people or management positions.*

### Key

*D - Director*

*LM - Learning Manager*

*T - Tutors*

*A - Administrator*

Safety arrangements	D	LM	T	A
Managing Safety & Health at Work	✓			
Accident, Incident, Ill Health Reporting and Investigation	✓		✓	
Workplace H&S Consultation - One-to-one	✓			
Risk Assessment and Hazard Reporting	✓	✓		
Substance & Alcohol Abuse	✓			
Purchasing	✓			
New and Expectant Mothers	✓			
Lone Working	✓			
Health & Safety Training	✓	✓		
Home Working	✓	✓		
Safe Systems of Work	✓	✓		
Action on Enforcing Authority Reports	✓			
Equality and Disability Discrimination Compliance	✓			
H&S Information for Employees - UK	✓			
Fire Safety Arrangements & Procedures - no premises	✓			
First Aid	✓			
Welfare, Amenities & the Working Environment - no premise	✓	✓		
The Provision, Use & Maintenance of Work Equipment	✓			
Slips, Trips & Falls	✓			
Occupational Road Safety	✓			
Display Screen Equipment & DSE User Eye Tests & Spectacles	✓			
Stress in the Workplace	✓			
Aggression & Violence in the Workplace	✓	✓	✓	
Work with Children	✓	✓		
Educational Visits	✓	✓		

### Note:

People with delegated responsibilities for health and safety issues should ensure that the required risk assessments and safety records are completed, either by them or by

others and that the required control measures are implemented when work activities take place.

Where more than one person has been assigned responsibility to a particular subject, each should ensure that they have fulfilled their responsibilities in the areas under their control and completed the relevant records. Together they need to check that collectively the organisation has covered all aspects of safety management for the subject.

## Relevant Legislation

In most cases Health and Safety legislation requires common sense, reasonably practicable precautions to avoid the risk of injury or ill-health at work. Our Health and Safety Management System does not quote specific legal references; giving instead the information and detail of what is required in practice to secure compliance. If the guidance and requirements of our Health and Safety Management System are adopted compliance with the legal requirements will be achieved.

This page sets out, for the record, details of the main statutes and regulations affecting health and safety at work in force when this policy was prepared. Some of those listed will not apply to our operations, but we need to be aware of them should circumstances change.

The Online Reference Library contains a similar list which will always be up to date. The document is titled 'Health and Safety Legislation (UK)'.  
 Further detail and access to the specific wording of each of these legal requirements is available from the 24 Hour Advice Service on 0844 892 2785.

**Note.** Although the UK has left the EU, by virtue of the European Union (Withdrawal) Act 2018 and associated legislation, the European Regulations listed here remain in force until replaced by domestic legislation

- Building Regulations 2010 (as amended)
- Building Safety Act 2022
- European Regulation (EC) No 2016/425/2016 on Personal Protective Equipment
- European Regulation (EC) No 2008/1272 on classification, labelling and packaging of substances and mixtures
- European Regulation (EC) No 2003/2003 concerning the export and import of dangerous chemicals, as amended
- Chemicals (Health and Safety) and Genetically Modified Organisms (Contained Use) (Amendment etc.) (EU Exit) Regulations 2019
- Classification, Labelling and Packaging of Chemicals (Amendments to Secondary Legislation) Regulations 2015
- Confined Spaces Regulations 1997
- Construction (Design and Management) Regulations 2015
- Control of Artificial Optical Radiation at Work Regulations 2010
- Control of Asbestos Regulations 2012
- Control of Electromagnetic Fields at Work Regulations 2016
- Control of Lead at Work Regulations 2002
- Control of Major Accident Hazard Regulations 2015
- Control of Noise at Work Regulations 2005
- Control of Substances Hazardous to Health Regulations 2002 (as amended)
- Control of Vibration at Work Regulations 2005
- Corporate Manslaughter and Homicide Act 2007
- Dangerous Substances and Explosive Atmospheres Regulations 2002
- Electricity at Work Regulations 1989

- Employers Liability (Compulsory Insurance) Regulations 1998 (as amended)
- Employment of Women, Young Persons and Children Act 1920.
- Equality Act 2010
- Fire Safety Act 2021
- Fire Safety (England) Regulations 2022
- Furniture and Furnishings (Fire) (Safety) Regulations 1988 (as amended)
- Gas Appliances (Safety) Regulations 1995 (as amended)
- Gas Safety (Installation and Use) Regulations 1998 (as amended)
- Gas Safety (Management) Regulations 1996
- Hazardous Waste Regulations 2005 (as amended)
- Health and Safety (Amendment) (EU Exit) Regulations 2018
- Health and Safety Offences Act 2008
- Health and Safety at Work etc. Act 1974
- Health and Safety (Consultation with Employees) Regulations 1996
- Health and Safety (Display Screen Equipment) Regulations 1992
- Health and Safety (First Aid) Regulations 1981 (as amended)
- Health and Safety Information for Employees Regulations 1989 (as amended)
- Health and Safety (Safety Signs and Signals) Regulations 1996 (as amended)
- Health and Safety (Sharp Instruments in Healthcare) Regulations 2013.
- Health and Safety (Training for Employment) Regulations 1990
- Health and Safety at Work etc. Act 1974 (General Duties of Self-Employed Persons) (Prescribed Undertakings) Regulations 2015
- Ionising Radiations Regulations 2017
- Lifting Operations and Lifting Equipment Regulations 1998
- Lifts Regulations 2016
- Management of Health and Safety at Work Regulations 1999 (as amended)
- Manual Handling Operations Regulations 1992 (as amended)
- Notification of Cooling Towers and Evaporative Condensers Regulations 1992
- Personal Protective Equipment at Work Regulations 1992 (as amended)
- Personal Protective Equipment Regulations 2002
- Personal Protective Equipment at Work (Amendment) Regulations 2022
- Regulation (EU) 2016/425 on Personal Protection Equipment
- Pressure Systems Safety Regulations 2000
- Provision and Use of Work Equipment Regulations 1998
- Radiation (Emergency Preparedness and Public Information) Regulations 2001
- The Registration, Evaluation, Authorisation and Restriction of Chemicals Regulations 2007 (REACH)
- Regulatory Reform Fire Safety Order 2005
- Reporting of Injuries, Diseases and Dangerous Occurrences Regulations 2013
- Safety Representatives and Safety Committees Regulations 1977
- Work at Height Regulations 2005 (as amended)

- Workplace (Health, Safety and Welfare) Regulations 1992
- Working Time Regulations 1998 (as amended)

## Safety Arrangements Table

Ref. Number	Title	Publication Date
SA1-1	Managing Safety & Health at Work	v1
SA1-3	Accident, Incident, Ill Health Reporting and Investigation	v2
SA1-5	Workplace H&S Consultation - One-to-one	v1
SA1-6	Risk Assessment and Hazard Reporting	v2
SA1-8	Substance & Alcohol Abuse	v1
SA1-9	Purchasing	v1
SA1-11	New and Expectant Mothers	v2
SA1-13	Lone Working	v3
SA1-14	Health & Safety Training	v1
SA1-18	Home Working	v2
SA1-20	Safe Systems of Work	v1
SA1-21	Action on Enforcing Authority Reports	v1
SA1-22	Equality and Disability Discrimination Compliance	v2
SA1-23	H&S Information for Employees - UK	v1
SA2-1np	Fire Safety Arrangements & Procedures - no premises	v3
SA3-1	First Aid	v2
SA3-2np	Welfare, Amenities & the Working Environment - no premises	v3
SA4-2	The Provision, Use & Maintenance of Work Equipment	v1
SA4-8	Slips, Trips & Falls	v1
SA4-31	Occupational Road Safety	v2
SA5-11	Display Screen Equipment & DSE User Eye Tests & Spectacles	v2
SA5-18	Stress in the Workplace	v1
SA5-19	Aggression & Violence in the Workplace	v1
SA6-14	Work with Children	v1
SA6-15	Educational Visits	v1



## MANAGING SAFETY AND HEALTH AT WORK

We recognise the business benefits that can accrue from the effective management of safety and health at work. To obtain these benefits for our company we have recognised the need for an effective management system and have taken steps to put such a system in place.

We have done this by;

- Nominating an individual member of the senior management to take responsibility for managing safety and health at work.
- Providing adequate resources
- Providing such health and safety information, instruction and training for all workers as is necessary for them to be able to work without risk to their health or safety so far as is reasonably practicable.
- Recording and analysing all reportable accidents, minor accidents, near-miss incidents and dangerous occurrences.
- Reporting reportable accidents within the statutory timescales (information is in our Guidance Notes).
- Providing and recording relevant training.
- Routinely reviewing the operation of our reporting system.
- Having access to competent health and safety advice.

The person nominated with responsibility for overseeing this organisation's arrangements for managing safety and health at work is identified within the Responsibility Table of our Health and Safety Policy.

## MANAGING SAFETY AND HEALTH AT WORK

### Action Plan

**In order to meet our legal obligations to manage safety and health at work we need to;**

1. Identify a person to take responsibility for managing health and safety in our business activities.
2. Ensure that the responsible person understands their duties and responsibilities.
3. Provide adequate training for that person.
4. Give that person the authority required and the resource necessary for them to fulfil their role.
5. Plan our management of health and safety at work, set up and maintain systems that will deliver a satisfactory health and safety performance.
6. Explain to our workers, Supervisors and Managers the nature of our arrangements for managing health and safety at work.
7. Ensure that all our workers are aware of the need to make concerns about health and safety at work known and report accidents, incidents and cases of work-related ill health to their Managers.
8. Review our arrangements from time to time to ensure that they are fully understood and are operating correctly.

Advice and guidance on the reporting requirements and reporting system can be found in our Guidance Note 1-1 – Managing Safety and Health at Work.

## ACCIDENT, INCIDENT, ILL-HEALTH REPORTING AND INVESTIGATION

We encourage our employees to report all personal injury accidents, near miss incidents (dangerous occurrences) and ill-health that happen in the course of their work so that we can investigate the causes, learn from experience and improve our management of health and safety. We also use the information to help us meet our obligations under the legislation requiring accidents to be reported to the Enforcing Authority.

We do this by;

- Nominating an individual member of staff to be responsible for investigating, recording and reporting accidents, incidents and cases of work related ill-health.
- Having accident, incident and work related ill-health reporting procedures.
- Recording and analysing all reportable accidents, minor accidents, near-miss incidents (dangerous occurrences) and work related ill-health.
- Reporting reportable accidents, dangerous occurrences and work related ill-health within the statutory timescales (information is in our Guidance Notes).
- Developing and implementing investigation protocols and policies.
- Providing and recording relevant training.
- Ensuring that those carrying out investigations are competent.
- Routinely reviewing the outcome of investigations and the operation of our reporting system.

The personnel responsible for reporting accidents, dangerous occurrences and work related ill-health are identified within the Responsibility Table of our Health and Safety Policy.

## ACCIDENT, INCIDENT, ILL-HEALTH REPORTING AND INVESTIGATION

### Action Plan

**In order to meet our legal obligations to manage effectively the health and safety of our workforce and report accidents, incidents and cases of work related ill health to the Enforcing Authority we need to;**

1. Identify people to be responsible for investigating the cause of injuries, incidents and ill-health and to manage our reporting arrangements.
2. Ensure that the people nominated with responsibility for these arrangements have the knowledge and experience to carry out investigations and operate the system effectively.
3. Provide suitable training for those who don't.
4. Create the systems and make sure all members of our workforce, including managers and supervisors are aware of and understand them.
5. Provide an accident book, implement the procedures, and ensure that they are followed in practice.
6. When investigating consider;
  - a. the time and date of the event, the prevailing weather conditions and local lighting.
  - b. what was happening or what the injured person and any witnesses were doing.
  - c. risk assessments or safe systems of work for the task being carried out and details of relevant training given to the injured party and others involved.
  - d. obtaining witness statements, where possible.
  - e. making a sketch of the accident area, include accurate measurements, if appropriate.
  - f. taking photographs of the site; record any unusual or causal features present.
  - g. making observational notes on the potential causation, noting features, equipment defects or work practice that may have contributed to the eventual outcome.
  - h. the underlying, as well as the immediate, causes of the event.
7. Keep a written record of investigations.
8. Review the causes of the events that have occurred to consider whether similar events could be prevented by the introduction of reasonably practicable control measures.
9. Monitor and review the operation of this procedure from time to time to check that the investigation and reporting procedures are understood, are being followed in practice and that lessons learned are being put into practice.

For information and advice see;

Guidance Note 1-3 – Accident, Incident and Ill-Health Reporting.

Guidance Note 1-4 – Accident Investigation.

## WORKPLACE HEALTH AND SAFETY CONSULTATION

We have a duty to consult with our workforce on matters affecting their health, safety and welfare whilst at work. To meet this obligation we have established a process for Managers to consult with employees and elected safety representatives about work-related health, safety and welfare issues. We also use this system to deliver simple safety messages and rules through short tool-box talks.

We do this by:

- Nominating Supervisors and Managers to organise and hold consultation meetings and tool box talks.
- Arranging scheduled formal consultation meetings or tool box talks between Managers, elected representatives and employees (see also Guidance Note – Workplace Health and Safety Consultation).
- Developing and implementing consultation procedures.
- Implementing and undertaking where necessary a ‘one to one’ consultation process with individual employees. Details of such sessions will be recorded.
- Taking and keeping minutes of consultation meetings, making them available to all staff.
- Being seen to listen and act on issues and concerns raised during ‘one to one’ consultation meetings.

The management and supervisory personnel responsible for implementing and operating this consultation process are identified within the Responsibility Table of our Health and Safety Policy.

## WORKPLACE HEALTH AND SAFETY CONSULTATION

### Action Plan

**To set up a system for consulting with our workforce on health and safety at work matters we need to;**

1. Ensure that the people nominated with responsibility for these arrangements have the knowledge and experience to operate the system effectively.
2. Provide suitable training for those who don't.
3. Create the system and make sure it is known to all members of our workforce.
4. Consider as part of the system;
  - a. recognising and involving representatives of the workforce from all levels.
  - b. permitting employee representatives to have time off to attend relevant health and safety training.
  - c. provide training for employee representatives if necessary or beneficial to the process.
  - d. scheduling health and safety as an agenda item for Consultation meetings.
  - e. implementing and undertaking 'one to one' consultation sessions with individual employees.
  - f. formally recording the outcomes of all consultation meetings and retaining these records.
  - g. making the outcomes of consultation meetings available to all those employees affected by them.
5. Explain these arrangements to our workforce. Ensure they are understood.
6. Implement the procedure and ensure that it is followed in practice.
7. Monitor and review the operation of this procedure from time to time to check that our workforce is consulted about health and safety matters that affect them whilst at work.

Advice and guidance on consultation arrangements and procedures can be found in our Guidance Note 1-5 – Workplace Health and Safety Consultation.

## RISK ASSESSMENT AND HAZARD REPORTING

We have a duty to assess the significant risks arising out of our business activities and for specific areas of concern. We have a duty to implement the findings of these risk assessments to ensure the safety, health and welfare of our employees and others who may be affected by our work activity.

To support this process and our management of health and safety we encourage our employees to report all hazards observed in the course of their work, so that potential risks can be identified and the appropriate action taken.

We do this by:

- Nominating senior staff members to oversee our risk assessment process and hazard reporting procedure.
- Ensuring that risk assessments are undertaken by competent, trained personnel.
- Developing risk assessments procedures, Safe Systems of Work and measures to effectively control the work activities within our work premises.
- Explaining the results of risk assessments to our workforce.
- Implementing the findings of the risk assessments, procedures, strategies, Safe Systems of Work and control measures.
- Implementing hazard reporting procedures and explaining them to our workforce.
- Recording and analysing hazards when they occur and investigating corrective and preventive measures.
- Employees and others following our procedures, control measures and Safe Systems of Work.
- Regular review of existing risk assessments and identifying the need for additional assessments.
- Providing and recording relevant training.
- Routinely reviewing the operation of our systems.

The personnel responsible for the above measures are identified within the Responsibility Table of our Health and Safety Policy.

We use the experience from operating these arrangements to make improvements to our safety, health and welfare management system.

## RISK ASSESSMENT AND HAZARD REPORTING

### Action Plan

**For our risk assessment process to be sufficiently robust to protect the health, safety and welfare of our employees and those affected by our work activity we need to;**

1. Nominate a senior manager to take responsibility for identifying hazards and managing and co-ordinating risk assessment.
2. Appoint and train sufficient numbers of staff in the process of risk assessment.
3. Systematically identify the hazards to which our workforce and others are exposed.
4. Provide a means for the workforce to identify and report hazards or potential hazards to their managers.
5. Consider the risks from those hazards, however recognised, identifying people at risk.
6. Evaluate the risks and decide if further precautions are required.
7. In significant cases, record our findings.
8. Implement those findings.
9. Involve Managers and workers in identifying hazards and carrying out risk assessments.
10. Explain the results of risk assessments to any affected staff and detail any new precautions or systems of work they need to follow.
11. Review risk assessments on a regular basis, commensurate to the risk.
12. Review our arrangements from time to time to ensure that they are fully understood and operating correctly.

For information and advice see;

Guidance Note 1-6 – Hazard Reporting.

Guidance Note 1-10 – Risk Assessment.



## **SUBSTANCE and ALCOHOL ABUSE**

We have a duty to protect the safety, health and welfare of our employees and others from the hazards that may arise as a result of workers abusing alcohol and other substances.

We do this by:

- Nominating senior staff members to coordinate and manage our substance and alcohol abuse policies and provision.
- Developing and implementing strategies, policies and procedures.
- Providing competent accredited trained personnel to provide support and counselling services.
- Employees and others adhering to the contents of our procedures and policies.
- Providing and recording relevant training
- Monitoring and reviewing our systems; using our experience of operating these arrangements we aim to make improvements to the way we manage the risks from substance abuse.

The personnel responsible for the above measures are identified within the Responsibility Table of our Health and Safety Policy.

## **SUBSTANCE and ALCOHOL ABUSE**

### **Action Plan**

**To protect workers and others from the risks of working with people who abuse substances and alcohol we need to;**

1. Develop a policy for dealing with workers whose abuse of substances and alcohol put other people at work at risk.
2. Consider;
  - a. The problem should be treated as an illness.
  - b. The problem can be successfully treated.
  - c. Disciplinary action is a last resort.
  - d. Sufferers may find it difficult to admit to a problem.
  - e. It is easier to take action in the early stages of the condition.
  - f. Staff should be able to identify early signs of problems.
  - g. Advice is available from many organisations including local Health Authorities.
3. Develop a policy and procedure based on these considerations.
4. Explain these arrangements to our workforce. Ensure they are understood.
5. Provide training and information, where required, for staff nominated with responsibility so that they are able to identify workers with substance abuse problems.
6. Implement the procedure, identify who is to provide support and counselling services and ensure that it is followed in practice.
7. Ensure that staff, particularly Managers and Supervisors, remains aware of our procedure although we hope and expect it will not be required in practice.
8. Monitor and review the operation of this procedure whenever it has been used, making changes identified as necessary or beneficial.

Information and advice on this subject can be found in our Guidance Note 1-8 - Substance and Alcohol Abuse.

## PURCHASING

We have a duty to ensure the safety, health and welfare of our employees and others who enter our premises and we have systems in place to protect these groups from any adverse effects of all plant, equipment, supplies and substances that we purchase to support our work activities.

Our systems consist of:

- Nominating senior staff members to identify and manage the organisation's safe purchasing requirements.
- Developing and implementing a purchasing policy, identifying the safest available options.
- Ensuring that this policy is implemented by trained and competent staff.
- Ensuring that the equipment purchased is safe, adequate and suitable for its purpose, and that safety devices and other control measures are fitted.
- Providing adequate and sufficient personal protective equipment to employees.
- Providing relevant training.
- Monitoring and reviewing our systems; using our experience of operating these arrangements we aim to make improvements to our purchasing policy.

The personnel responsible for the above measures are identified within the Responsibility Table of our Health and Safety Policy.

## **PURCHASING**

### **Action Plan**

**To ensure that we purchase work equipment and substances that are safe, so far as is reasonably practicable, when used by our workers and others we need to;**

1. Identify who in our company is authorised to purchase equipment, supplies and substances. Consider whether they need specific training for certain health and safety conditions.
2. Consider where we buy equipment and substances.
3. Obtain Manufacturer's Safety Data Sheets for the substances we purchase and consider the hazard and risk data provided.
4. When buying equipment specify in purchase orders that it complies with relevant European or National Standards.
5. On receipt of new equipment check that where relevant it bears compliance markings.
6. Involve workers in developing a procedure based on these considerations.
7. Explain these arrangements to our workforce. Ensure they are understood.
8. Provide training where required and information for staff nominated with responsibility.
9. Implement the procedure and ensure that it is followed in practice.
10. Monitor and review the operation of this procedure from time to time, making changes identified as necessary or beneficial.

Information and advice about health and safety on this subject can be found in our Guidance Note 1-9 – Purchasing.

## NEW AND EXPECTANT MOTHERS

We have a duty to protect the health of new and expectant mothers from hazards that might be present in the workplace. We also have a duty to assess the risks to women of child bearing age from our activities and inform them of any potential risks that might affect a pregnancy.

We do this by:

- Nominating senior staff members to identify and assess the hazards which pose risk to new and expectant mothers.
- Developing and implementing systems and procedures that will protect all women of child bearing age from risks to unborn children.
- Developing and implementing systems and procedures that will protect new and expectant mothers and their children from hazards and risks in our workplace or risks from the work activity.
- Considering the personal needs of each new and expectant mother.
- Ensuring that the assessments are sensitively carried out by competent, trained personnel.
- Implementing the findings of each assessment.
- New and expectant mothers and other workers following agreed procedures and control measures.
- Recording our assessments and agreed plans.
- Monitoring and reviewing our systems; using our experience of operating these arrangements we aim to make improvements to the way we manage potential risks to new and expectant mothers.

The personnel responsible for the above measures are identified within the Responsibility Table of our Health and Safety Policy.

## NEW AND EXPECTANT MOTHERS

### Action Check List

**To protect the health of new and expectant mothers and women of child bearing age we should;**

1. Assess the risks that our business activities may have on women of child bearing age and any potential foetus.
2. Inform the workforce of those risks.
3. Reduce those risks so far as is reasonably practicable.
4. Assess the risks to any worker who notifies us that they are pregnant or are returning to work after having given birth.
5. Consider factors such as;
  - a. Substances to which they might be exposed.
  - b. The size and shape of their workstation.
  - c. Posture.
  - d. Vibrations.
  - e. Environmental factors.
  - f. Ability to stand or sit for long periods.
  - g. Night working.
  - h. Lifting and carrying.
  - i. Noise levels.
  - j. Welfare arrangements.
6. Discuss the results of the risk assessment with the worker.
7. Consider how to reduce risks.
8. Find alternative work for the worker if it is not possible to reduce risks in her current job to an acceptable level. Alternatively give her paid absence from work.
9. Implement our decisions.
10. Make sure Supervisors and other employees are aware and understand the measures to be taken.
11. Review the risk assessment as pregnancy develops or as the pregnant worker makes any concerns or problems known.

Advice and guidance on managing the health and safety of new and expectant mothers can be found in Guidance Note 1-11.

## LONE WORKING

Our company has a duty to ensure the safety, health and welfare of our workforce whilst at work. That duty extends to employees who travel during the course of their work and those who work away from our core premises.

We do this by:

- Nominating senior staff members to consider the health, safety and welfare of lone workers.
- Identifying situations where lone working is required which affect our employees.
- Making an assessment of the risks to members of our workforce who are or may become lone workers.
- Developing and implementing control measures and procedures to ensure their health and safety whilst at work.
- Providing sufficient funding support to enable the development and implementation of procedures, risk assessments and control measures.
- Ensuring that procedures and control measures are in place for lone working situations.
- Ensuring that identified equipment needs are met and training on their use is given.
- Ensuring that the content of the procedures and risk assessments are made available to all staff.
- Providing and recording training.
- Monitoring and reviewing our systems; using our experience of operating these arrangements we aim to make improvements to the way we manage the risks from lone working.

The personnel responsible for the above measures are identified within the Responsibility Table of our Health and Safety Policy.

## LONE WORKING

### Action Plan

**To protect the health, safety and welfare of our workers who work alone, whether it is because they are a mobile worker, because they work away from our core operating site or for other reasons, we need to;**

1. Identify who among our workforce is or is potentially a lone worker.
2. Assess the risks to those identified as lone workers.
3. Identify the control measures already in place and any additional measures that may be required.
4. Consider, as part of our assessment, issues such as;
  - a. Where they work.
  - b. Are they at risk because they handle cash?
  - c. Are they at risk because they are work at a remote or hazardous location?
  - d. Are they at greater risk because they are working abroad?
  - e. Are they at greater risk in the winter months?
  - f. Are they at risk from a violent client or a member of the client's family?
  - g. Are they likely to cut corners because they are not under direct supervision?
  - h. Are they at risk because of health issues?
  - i. Are they at risk because a significant part of their day is spent driving?
  - j. Are they at risk because they work exceptional hours?
  - k. Are they at risk because they do not have access to welfare or first aid facilities?
  - l. Mobile phone signals.
5. Keep a written record of significant risk assessments and the control measures and systems of work adopted.
6. Make sure that Managers and Supervisors understand the procedures and arrangements. Consider whether they need any training.
7. Explain our system and arrangements to the workforce. Ensure they are understood and provide further training where necessary.
8. Implement the procedure and ensure that it is followed in practice.
9. Monitor and review the operation of this procedure from time to time and whenever an employee reports an accident or case of ill health attributable to working alone, make changes to the procedure identified as necessary or beneficial.

Advice on managing the risks from lone working can be found in Guidance Note 1-13 and in Guidance Note 1-24 where people are working abroad.



## HEALTH AND SAFETY TRAINING

We have a duty to protect the health, safety and welfare of our employees whilst they are at work and others who might be affected by our work activities. Among other specific arrangements we need to be sure that our workforce is trained to recognise hazards and risks and what they need to do to eliminate, reduce and avoid risk.

We do this by:

- Nominating senior staff members to manage Health and Safety training.
- Making an assessment of the risks to our workforce and others from an inadequately trained workforce.
- Developing and implementing training policies, programmes and arrangements.
- Ensuring that the management of the policy, programmes and arrangements are undertaken by competent, trained personnel.
- Managing our activities to ensure that employees are adequately trained for the variety of tasks which they may be required to do.
- Providing and recording relevant training.
- Monitoring and reviewing our systems; using our experience of operating these arrangements we aim to make improvements to the way we manage our Health and Safety training programmes.

The personnel responsible for above measures are identified within the Responsibility Table of our Health and Safety Policy.

## HEALTH AND SAFETY TRAINING

### Action Check List

**In developing and implementing training policies, programmes and arrangements we need to:**

1. Assess our work activity to identify where and when workers or the public may be exposed to hazards and risks.
2. Where we identify hazards we need to consider the associated risks and the ability of staff to control them and then to identify whether their knowledge of and training about control measures is adequate.
3. Identify any jobs that require workers to have received specific health and safety training.
4. Identify the systems already in place to provide training and any additional measures that may be required.
5. Consider procedures and practices including ;
  - a. Plant and machinery.
  - b. Chemical and chemical processes.
  - c. Works transport.
  - d. Working at height.
  - e. Lifting machines and equipment.
  - f. Electrical safety.
  - g. Mundane work.
  - h. Occasional work activities.
  - i. Training needs analyses for individuals.
6. Involve the workforce in making these assessments of our needs.
7. Develop procedures, programmes and practices tailored to our workplace.
8. Explain these arrangements to the workforce, their Supervisors and Managers. Ensure they are understood and provide further training where necessary.
9. Implement the procedures and ensure that they are followed in practice.
10. Monitor and review the operation of the procedures from time to time making changes identified as necessary or beneficial.

Advice and guidance on the control of Health and Safety Training can be found in Guidance Note 1-14.

## HOME WORKING

We have a duty to protect our employees from the hazards and risks which may arise when employees work from home.

We do this by:

- Nominating senior staff members to manage and reduce the risks posed from home working.
- Making an assessment of the risks arising from home working to our workforce and others.
- Developing and implementing control measures, policies and Safe Systems of Work.
- Ensuring that the policy, procedures, Safe Systems of Work and control measures relating to home working are managed by competent, trained personnel.
- Managing our activities to ensure that employees and others use the control measures provided and follow our policies, procedures and Safe Systems of Work.
- Providing and recording relevant training.
- Monitoring and reviewing our systems; using our experience of operating these arrangements we aim to make improvements to the way we manage the risks posed from home working.

The personnel responsible for the above measures are identified within the Responsibility Table of our Health and Safety Policy.

## HOME WORKING

### Action Plan

**To protect workers from the risks associated with home working we need to:**

1. When potential homeworkers are identified, assess the suitability of their job and home for 'home working' using 'Form HWVC'.
2. Consider:
  - a. If the designated home working area is clear from obstructions and tripping hazards.
  - b. If the equipment (chair, desk, keyboard) is suitable for the user and their activities.
  - c. If equipment is ergonomically sound for the particular worker.
  - d. If sufficient storage facilities are available.
  - e. If lighting is adequate in the working area.
  - f. Is the temperature in the work area comfortable?
  - g. Is the area well ventilated?
  - h. Are all cables and plugs in use in good repair and visually acceptable?
  - i. Are all items of electrical equipment in good repair and working correctly?
  - j. Has the home worker had basic manual handling and ergonomics training?
  - k. First Aid arrangements.
  - l. Smoke alarms, fire fighting equipment and emergency escape plans.
3. Ensure workers have an area in the home designated strictly to their work to help them separate their working area from their leisure activities and home life.
4. Provide suitable IT equipment, some laptop and portable computers may not be suitable for home use.
5. Make sure homeworkers are properly managed.
6. Encourage home workers to report all accidents/incidents whilst working from home to their Supervisor as soon as practicable. Supervisors should ensure that the accident and incident report form is completed.
7. Ensure records of risk assessments, workplace inspections, remedial actions taken, training provided and scheduled communications are kept for a minimum of 3 years.

Information and advice on the health and safety of home workers is available in Guidance Note 1-18.

## SAFE SYSTEMS OF WORK

We have a duty to ensure our workforce are provided with clear instructions and training when undertaking potentially hazardous tasks that pose significant risks.

We do this by:

- Nominating senior staff members to oversee and implement Safe Systems of Work.
- Identifying where Safe Systems of Work are required.
- Developing Safe Systems of Work to effectively control the work activities within our work premises.
- Communicating the Safe Systems of Work to applicable employees.
- Ensuring that Safe Systems of Work are created by competent, trained personnel.
- Providing training on the Safe System to the workforce.
- Regular checks to ensure that the Systems are being followed.
- Reviewing our systems.

The personnel responsible for the above measures are identified within the Responsibility Table of our Health and Safety Policy.

We use the experience from operating these arrangements to make improvements to our safety, health and welfare management system.

## SAFE SYSTEMS OF WORK

### Action Plan

**To ensure that adequate Safe Systems of Work are in place for employees to follow we need to;**

1. Appoint and train sufficient numbers of staff in the creation of the Safe System of Work.
2. Systematically identify the areas where a Safe System of Work may be required.
3. Assess the task and identify the hazards.
4. Define the safe method of undertaking the task.
5. Document the Safe System of Work and ideally display it at the work site where the work takes place.
6. Implement the System and ensure employees understand it. Provide training where necessary.
7. When developing and implementing Safe Systems of Work we should involve Managers and workers in the task being assessed.
8. Review Safe Systems of Work on a regular basis or when situations change.

Advice and guidance on Safe Systems of Work can be found in our Guidance Note 1-20 – Safe Systems of Work.

## ACTION ON ENFORCEMENT AUTHORITY REPORTS

We recognise the benefits that will accrue from early action following receipt of reports from the Enforcement Authority in regard to health safety and welfare issues. To obtain these benefits we have recognised the need for an effective management system and have taken steps to be able to action such reports.

We have done this by;

- Nominating an individual member of the senior management who will coordinate actions required to meet the requirements of Enforcement Authorities.
- Providing adequate resources either financial or human to be able to meet the requirements of the Enforcing Authority.
- Routinely reviewing the operation of our reporting system.
- Having access to competent health and safety advice.

The person nominated with responsibility for overseeing this organisation's arrangements for compliance with Enforcing Authority requirements is identified within the Responsibility Table of our Health and Safety Policy.

## **ACTION ON ENFORCEMENT AUTHORITY REPORTS**

### **Action Plan**

**In order to meet our legal obligations to provide adequate health and safety information to employees we need to;**

1. Identify a person who will coordinate actions required to meet the requirements of Enforcement Authorities.
2. Ensure that the responsible person understands their duties and responsibilities.
3. Provide adequate training for that person.
4. Give that person the authority required and the resource necessary for them to fulfil their role.
5. Ensure that our workers are aware of the need to make concerns about health and safety known and report accidents, incidents and cases of work-related ill health to their Managers.
6. Review our arrangements from time to time to ensure that they are fully understood and are operating correctly.

Advice and guidance on this subject can be found in our Guidance Note 1-21 Action On Enforcement Authority Reports.



## EQUALITY, DISABILITY DISCRIMINATION AND COMPLIANCE

We recognise the benefits that will accrue from planned and carefully considered arrangements in regard to the equal treatment of all people and health, safety and welfare issues. To obtain these benefits we have recognised the need for an effective management system and have taken steps to be able to successfully manage disability in the workplace.

We have done this by;

- Nominating an individual member of the senior management who will coordinate actions required to meet the requirements of disadvantaged and vulnerable persons
- Providing adequate resources either financial or human to be able to reasonable adjustments to our workplace(s)
- Allowing employees to nominate safety representatives who will coordinate issues arising from their colleagues in respect of health, safety and welfare.
- Providing adequate resources
- Providing such health and safety information, instruction, and training for all workers as is necessary for them to be able to work without risk to their health or safety or welfare so far as is reasonably practicable.
- Recording and analysing all reportable accidents, minor accidents, near miss incidents and dangerous occurrences.
- Providing and recording relevant training
- Routinely reviewing the operation of our reporting system.
- Having access to competent health and safety advice.

The person nominated with responsibility for overseeing this organisation's arrangements for compliance with statutory requirements in this respect is identified within the Responsibility Table of our Health and Safety Policy.

## **EQUALITY, DISABILITY DISCRIMINATION AND COMPLIANCE**

### **Action Plan**

**In order to meet our legal obligations to avoid disability discrimination to employees we need to;**

1. Identify a person who will coordinate actions required to meet the requirements of legislation that requires us to treat all people equally.
2. Ensure that the responsible person understands their duties and responsibilities.
3. Provide adequate training for that person.
4. Give that person the authority required and the resource necessary for them to fulfil their role.
5. Review our arrangements from time to time to ensure that they are fully understood and are operating correctly.

Advice and guidance on this subject can be found in our Guidance Note 1–22, Equality, Disability Discrimination and Compliance

## HEALTH AND SAFETY INFORMATION FOR EMPLOYEES

We recognise the benefits that will accrue from the provision of effective information regarding health safety and welfare activities to our employees. To obtain these benefits we have recognised the need for an effective management system and have taken steps to provide adequate information to employees and others.

We have done this by;

- Allowing employees to nominate safety representatives who will coordinate issues arising from their colleagues in respect of health, safety and welfare.
- Providing adequate resources
- Providing such health and safety information, instruction, and training for all workers as is necessary for them to be able to work without risk to their health or safety or welfare so far as is reasonably practicable.
- Recording and analysing all reportable accidents, minor accidents, near miss incidents and dangerous occurrences.
- Providing and recording relevant training
- Routinely reviewing the operation of our reporting system.
- Having access to competent health and safety advice.

The person nominated with responsibility for overseeing this organisation's arrangements for provision of information to employees is identified within the Responsibility Table of our Health and Safety Policy.

## HEALTH AND SAFETY INFORMATION FOR EMPLOYEES

### Action Plan

**In order to meet our legal obligations to provide adequate health and safety information to employees we need to;**

1. Identify a person to take responsibility for ensuring that adequate information is provided to employees.
2. Ensure that the responsible person understands their duties and responsibilities.
3. Provide adequate training for that person.
4. Give that person the authority required and the resource necessary for them to fulfil their role.
5. Identify the most effective methods by which information will be circulated to the employees.
6. Display the required health and safety 'What you should know' poster and complete the information on the poster.
7. Provide information to our employees in regard to their responsibilities and essential safety rules.
8. Explain to our workers, supervisors and managers the nature of our arrangements for managing health, safety and welfare.
9. Ensure that our workers are aware of the need to make concerns about health and safety known and report accidents, incidents and cases of work-related ill health to their Managers.
10. Review our arrangements from time to time to ensure that they are fully understood and are operating correctly.

Advice and guidance on this subject can be found in our Guidance Note 1-23 Health and Safety Information for Employees.

## **FIRE SAFETY ARRANGEMENTS AND PROCEDURES- no premises**

We have a legal duty to implement and maintain a fire safety programme to ensure employees have a full understanding of the evacuation procedures for the premises where they are working. We have put in place arrangements to meet these responsibilities and to identify and reduce the risks associated with fire and emergency situations.

Our arrangements consist of:

- Nominating a 'responsible person' to coordinate fire and emergency arrangements and take responsibility to ensure employees undertake work site specific induction training including the emergency evacuation procedures and arrangements.
- Identifying fire risks and potential emergency situations and who may be affected.
- Assessing the level of risk and recording the information in Risk Assessments.
- Implementing procedures and control measures to mitigate the risks posed.
- Developing Safe Systems of Work to reduce the potential incidence of fire and emergency situations.
- Adequate provision of tested and inspected fire fighting equipment in our vans and on any sites where we are in control of activities.
- Delivering training on the Risk Assessment and on the use of any fire fighting equipment provided.
- Reviewing our system.

The personnel responsible for fire and emergency arrangements are identified within the Responsibility Table of our Health and Safety Policy.

We use the experience of operating these systems to make improvements to our safety, health and welfare management system.

## **FIRE SAFETY ARRANGEMENTS AND PROCEDURES – no premises**

### **Action Plan**

**To protect workers and others from the risk of fire we need to develop a comprehensive fire safety programme. We need to;**

1. Nominate and train a person to be our competent and Responsible Person for fire safety matters.
2. Seek confirmation that there is an up to date fire risk assessment in respect of our clients' premises and processes.
3. Seek confirmation that sufficient and suitable fire alarm systems, means of escape, fire fighting equipment, emergency lighting and emergency signs are provided.
4. Make sure that clients explain to our workers the emergency procedures for safe and speedy evacuation to a place of relative safety in the event of a fire or other emergency.
5. Consider;
  - a. Fire prevention. Storage of flammables, waste disposal, open flames etc.
  - b. Potential sources of ignition including use of flammable substances and process related fire hazards.
  - c. Maintenance of fire alarms, smoke detectors, automatic door closers.
  - d. Maintenance of fire doors and escape routes.
  - e. Emergency procedures – fire wardens, fire and evacuation drills and safe assembly points.
  - f. Maintenance of fire extinguishers and fire fighting equipment.
  - g. Liaison with fire service and assisting the fire service in the event of a fire.
  - h. Providing and maintaining fire safety signs and notices.
  - i. Record keeping.
  - j. Safe means of shutting down electric, gas and fuel supplies.
6. Explain these Arrangements and Procedures to our Managers, Supervisors, workforce. Ensure they are understood.
7. Provide training where required and information for staff nominated with responsibilities.
8. Implement the Programme and ensure that it is followed in practice.
9. Monitor and review the operation of all aspects of the Fire Safety Programme at least twice a year and whenever a fire related incident happens, making changes to the fire risk assessment, arrangements and procedures identified as necessary or beneficial.

Advice and guidance on the development of a Fire Safety Programme can be found in the fire safety section of the health and safety management system.

## FIRST AID

We have a duty to provide suitable first aid arrangements for our staff whilst at work and visitors who may be affected by our activities. We have taken steps to provide first aid arrangements that meet this requirement.

We do this by:

- Nominating a Senior Manager to identify our needs and ensure continuing arrangements for first aid provision.
- Assessing the reasonable level of first aid provision required for our business at our workplace and for travelling staff.
- Recruiting sufficient members of staff to undertake first aid training as a first aider or appointed person, as appropriate.
- Arranging approved training for those people and keeping records of their training.
- Providing adequate numbers of trained personnel to be available at all times during business hours.
- Providing and maintaining sufficient quantities of first aid equipment and consumables.
- Displaying names and locations of first aid trained personnel or appointed persons in prominent positions throughout the premises.
- Routinely reviewing our first aid arrangements for suitability and ensuring that where we have trained first aiders qualifications are up to date.

## FIRST AID

### Action Plan

**To ensure that we meet our obligations to provide suitable first aid arrangements for our staff whilst at work and visitors who may be affected by our activities we need to take the following action;**

1. Assess our business activity to identify the level of first aid provision that will be necessary.
2. Consider issues including;
  - a. The likely severity of foreseeable work-related accidents.
  - b. The number of people likely to be in the workplace.
  - c. The nature of health and safety risks at the workplace.
  - d. The location and accessibility of the workplace.
  - e. Whether the need is for trained first aiders or appointed persons.
3. Keep a written record of our assessment and conclusions.
4. Explain our assessment and conclusions to our workforce.
5. Identify workers to be trained and take responsibility for administering first aid.
6. Provide approved training for appointed first aiders.
7. Keep records of this training and ensure qualifications are kept up to date.
8. Make sure our arrangements are understood and the responsible people known to all workers, Supervisors and Managers.
9. Provide suitable facilities and consumables for delivering first aid at our workplace.
10. Monitor and review from time to time the operation of this procedure in the light of experience making changes to our system identified as necessary or beneficial.

Information and advice on First Aid provision can be found in our Guidance Note 3-1 – First Aid.



## **WELFARE, STAFF AMENITIES, REST ROOMS and the WORKING ENVIRONMENT – no premises**

We are obliged to make and maintain arrangements for welfare and the provision of a safe and healthy working environment for our workforce whilst they are at work. This includes a duty to provide restrooms where work is arduous or conducted in a hostile environment and for the welfare of new and expectant mothers.

We do this by;

- Nominating senior staff members to make sure that our workers have adequate welfare facilities and a safe working environment when at our clients' premises.
- Making sure that adequate welfare provisions are provided on site.
- Ensuring that, at the sites we control, welfare facilities are fit for purpose and include adequate hot, cold and drinking water, sanitary conveniences, hand washing facilities, facilities for meal breaks, heating and ventilation.
- Ensuring that suitable and sufficient drying facilities are provided where required.,
- Providing adequate lighting for the work in hand.
- Providing and recording relevant instruction and training.
- Regular monitoring and review of our arrangements to ensure that they remain sufficient.

The personnel responsible for these measures are identified within the Responsibility Table of our Health and Safety Policy.

## **WELFARE, STAFF AMENITIES, REST ROOMS and the WORKING ENVIRONMENT – no premises**

### **Action Plan**

**To ensure that we make the proper and necessary arrangements for welfare and to provide a safe working environment for our workforce we need to;**

1. Consider the arrangements we have in place to provide for the welfare of our workforce whilst at work and to provide a safe working environment.
2. Assess the specific welfare arrangements, including rest rooms and catering areas, that are provided against both minimum legal requirements and what might reasonably be expected by law; particularly where work may be arduous or in a hostile environment.
3. Consider among other relevant issues;
  - a. our worksite, the condition of the buildings;
  - b. temperature, ventilation and lighting in the workplace;
  - c. the use of chemical, biological and radiological substances;
  - d. the condition of floors, walls and ceilings;
  - e. traffic routes;
  - f. sanitary and washing facilities;
  - g. clothing accommodation, changing rooms and rest rooms;
  - h. drinking water and the means for making hot drinks and heating food;
  - i. workers in isolated locations;
  - j. the needs of nursing and expectant mothers;
  - k. the heating and cleaning of rest rooms and welfare facilities.
4. Explain these facilities and arrangements to our workers.
5. Keep a written record of significant assessments, actions identified and taken.
6. Provide information and any necessary training to employees, Managers and any staff nominated with responsibility to ensure that our arrangements and provisions are understood.
7. Monitor welfare arrangements and facilities to ensure that they remain sufficient, are maintained in a good clean condition and are fit for purpose.

For information and advice, please see;

Guidance Note 3-2, Welfare and the Working Environment.

Guidance Note 3-8, Staff Amenities and Rest Rooms.

Guidance Note 1-11, New and Expectant Mothers.

## THE PROVISION, USE AND MAINTENANCE OF WORK EQUIPMENT

We have a duty to protect our employees and other people who use our premises from the health and safety risks associated with the provision and use of work equipment.

We do this by:

- Nominating senior staff members to consider the health and safety issues surrounding any new equipment that we obtain and the equipment that we use in the course of our business.
- Making an assessment of the risks from work equipment when in use and during its maintenance.
- Developing and implementing procedures, control measures, policies and Safe Systems of Work.
- Ensuring that any work carried out on work equipment is carried out by competent workers or competent contractors.
- Providing and using personal protective equipment where appropriate.
- Regular maintenance and servicing.
- Statutory inspections by competent accredited engineers and surveyors where required.
- Managing our activities to ensure that employees and others use the control measures provided and follow our policies, procedures and Safe Systems of Work.
- Providing relevant training and keeping training records.
- Monitoring and reviewing our systems; using our experience of operating these arrangements we aim to make improvements to the way we manage the provision and use of work equipment.

The personnel responsible for the above measures are identified within the Responsibility Table of our Health and Safety Policy.

## THE PROVISION, USE AND MAINTENANCE OF WORK EQUIPMENT

### Action Check List

**To protect workers and others from the risks from work equipment we need to:**

1. Consider our activities and identify where and when workers may be exposed to risks to their health and safety from our use of existing equipment.
2. Consider the implications for the health and safety of our workforce when purchasing or looking to purchase new equipment.
3. Assess the risks from any such exposure to work equipment, identifying control measures in place and any additional measure that may be required to avoid risk.
4. Consider relevant issues including:
  - a. What risks to health and safety might be created?
  - b. Do any parts look dangerous?
  - c. Do the guards adequately protect against the risk? Do they conform to the current BS, IS or EN standard?
  - d. Do fumes or dust escape from the equipment?
  - e. Is it used in flammable or explosive areas or in wet and adverse conditions? Is it designed and protected for such use?
  - f. Can you understand the controls? Are they in English?
  - g. Is it excessively noisy or is there excessive vibration?
  - h. Are there any special maintenance requirements?
  - i. Are parts that need maintenance easily accessible?
  - j. Does any part get very hot or cold?
  - k. Are there any live electrical parts exposed?
  - l. Are the supplied manufacturer's instructions clear and comprehensive?
5. Arrange for work equipment to be routinely serviced and maintained and for statutory inspections where required.
6. Keep a written record of significant risk assessments and the control measures and any systems of work or procedures adopted.
7. Implement the procedures and arrangements making sure that Managers and Supervisors understand them. Consider whether they need any training.
8. Explain our procedures and arrangements to our workforce. Ensure they are understood and followed in practice. Provide training where necessary.
9. Monitor and review the operation of this procedure from time to time and after any incident, making changes identified as beneficial or necessary.

Information and advice on the use of fixed and portable electrical equipment can be found in our Guidance Note 4-2 – The Provision, Use and Maintenance of Work Equipment.

## SLIPS, TRIPS AND FALLS

We have a duty to protect our workers and others visiting our premises from the risks of slipping, tripping and falling.

We meet this duty by:

- Nominating senior staff members to be responsible for monitoring and improving workplace pedestrian safety.
- Identifying all the potential causes of slips, trips and falls and assessing the risk.
- Developing and implementing procedures and control measures.
- Ensuring that pedestrian routes are fit for the purpose, that they are routinely maintained and checked.
- Ensuring that any risk assessments or safety inspections are carried out by competent and trained personnel.
- Adhering to our risk assessments, procedures and control measures.
- Providing wherever possible segregated traffic routes and adequate signage.
- Providing and recording relevant training.
- Regular monitoring and review of our arrangements to ensure that arrangements we have made remain sufficient to control the potential risk.

The personnel responsible for the above measures are identified within the Responsibility Table of our Health and Safety Policy.

## SLIPS, TRIPS AND FALLS

### Action Check List

**To protect our workforce and others who visit our premises from the risk of accidents caused by slips, trips and falls we need to;**

1. Identify where on our worksite there are potential areas for slips, trips or falls accidents.
2. Assess the hazards in each of those areas and the risks that people at work and others may face.
3. Identify existing controls and any additional measures that we should be taking.
4. Consider issues including;
  - a. Floor surfaces.
  - b. The environment.
  - c. Footwear.
  - d. Contamination.
  - e. Obstacles and obstructions.
  - f. Cleaning regimes.
  - g. People – human factors.
5. Involve workers in developing a procedure or arrangements based on these considerations.
6. Keep a written record of significant risk assessments and the control measures and systems of work adopted.
7. Make sure that Managers and Supervisors understand the procedures and arrangements. Consider whether they need any training.
8. Explain our system and arrangements to the workforce. Ensure they are understood and provide further training where necessary.
9. Implement the procedure and ensure that it is followed in practice.
10. Monitor and review the operation of this procedure from time to time and after any report of a dangerous incident or of a person suffering injury or due to slipping or tripping and falling on our premises or while at work making changes identified as necessary or beneficial.

Advice and guidance on slips, trips and falls can be found in Guidance Note 4-8.

## OCCUPATIONAL ROAD SAFETY

We have a duty to continue to manage, so- far as we can, the health, safety and welfare of our workforce when they are away from our premises and travelling in the course of their work.

We do this by:

- Nominating senior staff members to identify and manage the potential hazards to our workforce when driving in the course of our business.
- Assessing the risks to our workforce from driving in the course of our business.
- Developing and implementing policies and procedures.
- Ensuring that the vehicles are suitable and sufficient for their intended use and that they are maintained at their specified service intervals or when faults are identified.
- Ensuring that all vehicles are properly insured, taxed and Ministry of Transport tested, prior to road use.
- Ensuring that any risk assessments are undertaken by competent and trained personnel.
- Employees and Supervisors following our policies and procedures.
- Providing and recording relevant training.
- Monitoring and reviewing our systems; using our experience of operating these arrangements we aim to make improvements to the way we manage the risks associated with occupational road use.

The personnel responsible for the above measures are identified within the Responsibility Table of our Health and Safety Policy.

## OCCUPATIONAL ROAD SAFETY

### Action Check List

**To ensure the safety of our employees whilst travelling by road in the course of our business (and to protect others who might be affected by their actions) from the hazards and risks surrounding occupational road safety we need to;**

1. Assess our work activity to identify where and when workers may be exposed to hazards and risks on account of occupational road use.
2. Assess specific occupational road use risks to our workforce.
3. Involve the workforce in these assessments and in the identification of appropriate control measures.
4. Identify the control measures already in place and any additional measures that may be required. Refer to government and road safety organisations' published guidance.
5. Consider among other issues;
  - a. Working Time regulations.
  - b. Statutory limitation of commercial vehicle drivers' hours.
  - c. The positioning and security of loads – in cars, vans and large goods vehicles
  - d. The length of the working day when hours driving to and from a job, visit, training course etc. is added to the time spent on the task.
  - e. Schedules that don't require excessive speed and allow time for rest breaks.
  - f. Weather conditions.
  - g. Allowance for rest breaks.
  - h. Policy on overnight stays.
  - i. Advanced driver training.
  - j. Suitability of vehicles.
  - k. Vehicle maintenance.
6. Develop procedures, programmes and practices tailored to our workplace.
7. Make sure that Managers and Supervisors understand the procedures and arrangements. Consider whether they need any training.
8. Explain these arrangements to the workforce. Ensure they are understood and provide further training where necessary.
9. Implement the procedure and ensure that it is followed in practice.
10. Monitor and review the operation of this procedure from time to time and following any incident or injury related to occupational road use, making changes to the procedure identified as necessary or beneficial.

Advice and guidance on occupational road safety can be found in Guidance Note 4-31.



## DISPLAY SCREEN EQUIPMENT

We have a duty to protect the safety, health and welfare of our workforce from the risk involved in the use of display screen equipment (DSE).

We do this by:

- Nominating senior staff members to identify and reduce risks from the use of display screen equipment.
- Assessing the risks from display screen equipment to each member of our workforce who uses them.
- Developing and implementing control measures, policies and Safe Systems of Work.
- Ensuring that the management of the policy, procedures, Safe Systems of Work and control measures relating to the use of display screen equipment are undertaken by competent, trained personnel.
- Providing and using personal protective equipment where appropriate.
- Managing our activities to ensure that employees and others use the control measures provided and follow our policies, procedures and Safe Systems of Work.
- Providing and recording relevant training.
- Monitoring and reviewing our systems; using our experience of operating these arrangements we aim to make improvements to the way we manage the risks from display screen equipment.

The personnel responsible for the DSE assessment process and these measures are identified in the Responsibility Table of our Health and Safety Policy.

## DISPLAY SCREEN EQUIPMENT

### Action Check List

**To protect workers from the risks from display screen equipment we need to:**

1. Appoint a member or members of staff and train them to become a competent assessor for display screen equipment.
2. Assess our work activity to identify where and when workers use display screen equipment.
3. Ensure all display screen users complete a Self-Assessment Questionnaire which can be found in Guidance Note 5-11.
4. Identify any workers with health issues that make them particularly susceptible to problems in using display screen equipment.
5. Identify the control measures already in place and any additional measures that may be required.
6. Consider the issues, including;
  - a. Furniture
  - b. Screen size
  - c. Lighting; reflections and glare
  - d. Rest breaks; rotating work activity
  - e. Eye sight tests
  - f. Home and off-site users of display screen equipment
  - g. Self-assessments and follow-up.
7. Keep a written record of all risk assessments, whether self-assessments or assessments by trained assessors and the control measures and systems of work adopted.
8. Make sure that Managers and Supervisors understand the procedures and arrangements. Consider whether they need any training.
9. Explain our system and arrangements to the workforce. Ensure they are understood and provide further training where necessary.
10. Implement the procedure and ensure that it is followed in practice.
11. Report any incidence of reportable ill health caused by the use of display screen equipment to the Enforcing Authorities.
12. Monitor and review the operation of this procedure from time to time and whenever an employee develops a display screen equipment related illness, make changes to the procedure identified as necessary or beneficial.

Advice and guidance on health, safety and welfare in the use of display screen equipment can be found in Guidance Note 5-11.

## STRESS IN THE WORKPLACE

We recognise that we have a duty to take action to reduce and where reasonably practicable to eliminate ill health which is caused by work related stress.

We do this by;

- Nominating senior staff members to consider and manage the issue of work related stress.
- Developing and implementing a policy for identifying and managing work related stress.
- Involving our workforce in the development of this policy and our procedures.
- Providing information about the policy to all workers.
- Training Managers and Supervisors to recognise symptoms of work related stress.
- Ensuring that the policy is adopted and followed.
- Ensuring employees know what to do if they suspect they, or a colleague, are suffering from stress.
- Providing counselling or occupational health services and support.
- Monitoring and reviewing the policy and procedures; using our experience of operating these arrangements we aim to make improvements to the way we manage ill health caused by work related stress.

The personnel responsible for monitoring and implementing the above policy are identified in the Responsibility Table of our Health and Safety Policy.

## STRESS IN THE WORKPLACE

### Action Check List

**To protect our workforce from ill health caused by work related stress we need to;**

1. Assess our work activities to identify where and when workers or others may experience unacceptable levels of work related stress.
2. Prepare a stress policy and plan of action when a worker is identified as suffering ill health on account of work related stress.
3. Involve the workforce in developing the policy and plan of action.
4. Identify any control measures already in place and the additional measures or actions that may be required. Refer to published trade guidance and advice.
5. Consider among other issues;
  - a. The outward signs of stress;
    - i. emotional. Fatigue, anxiety, poor motivation in general.
    - ii. cognitive. Making mistakes, having accidents.
    - iii. behavioural. Deteriorating relationships with colleagues, irritability, indecisiveness, absenteeism, excessive smoking or drinking, overeating etc.
    - iv. physiological, Increased complaints about health - headaches, dizziness etc.
  - b. Stress risks assessments.
  - c. Support to an employee who is experiencing stress whether work related or not e.g. following a bereavement or separation.
  - d. The effect of new or changed roles without adequate training.
  - e. The effect of poor communication during times of change
  - f. Excessive workloads, long working hours, unsocial hours.
  - g. Working alone
  - h. Employees having to cover for the poor performance or attendance of colleagues.
  - i. Do employees have developmental opportunities.
  - j. Bullying and harassment by Managers, Supervisors and colleagues.
6. Develop procedures, programmes and practices tailored to our workplace.
7. Make sure that Managers and Supervisors understand the policy and procedure. Consider whether they need any training.
8. Explain these arrangements to the workforce. Ensure they are understood and provide further training where necessary.
9. Implement the policy and procedure and ensure that it is followed in practice.
10. Monitor and review the operation of the policy and procedure from time to time and following any case of ill health caused by work related stress, making changes to the procedure identified as necessary or beneficial.

Further advice and information on work related stress can be found in Guidance Note 5-18.

## AGGRESSION AND VIOLENCE

We recognise that we have a duty to take action to reduce so far as is reasonably practicable the risk of aggression and violence to our workforce whilst at work which arise from clients and/or the nature of our work.

We do this by:

- Nominating senior staff members to consider and manage the issue of aggression and violence at work.
- Developing and implementing a policy for identifying and managing work where there are risks of aggression and violence.
- Involving our workforce in the development of this policy and our procedures.
- Providing information about the policy to all workers.
- Training Managers and Supervisors to recognise work activities and locations where there are higher than normal risks of work related violence and aggression.
- Ensuring that the policy is adopted and followed.
- Ensuring employees know what to do if they suspect they, or a colleague, are under threat of violence or aggression at work.
- Providing counselling or occupational health services and support.
- Monitoring and reviewing the policy and procedures; using our experience of operating these arrangements we aim to make improvements to the way we manage the risk of injury or ill health caused by work violence and aggression.

The personnel responsible for monitoring and implementing the above policy are identified within the Responsibility Table of our Health and Safety Policy.

## AGGRESSION AND VIOLENCE

### Action Check List

**To protect our workforce from injury or ill health caused by violence and aggression at work we need to;**

1. Assess our work activities to identify where workers may be subjected to violence or aggression from clients or other people as a result of their work activities.
2. Prepare a policy and plan of action to deal with aggression and violence at work.
3. Involve the workforce in developing the policy and plan of action.
4. Identify any control measures already in place and the additional measures or actions that may be required. Refer to published trade guidance and advice. Take advice from the Police.
5. Consider among other issues;
  - a. Recognising where and why workers may be at risk.
  - b. Systems to allow the reporting of aggression and threats of violence at work.
  - c. Handling incidents – calling the police.
  - d. Security screens and alarms.
  - e. Workplace layout – make it difficult for aggressors to reach workers.
  - f. Lone working and security for workers off site.
  - g. Training workers to identify the early signs of aggressive behaviours and conflict management techniques.
  - h. Counselling.
  - i. Special arrangements for dealing with clients and people known to be aggressive or a risk to staff.
6. Develop procedures, programmes and practices tailored to our workplace.
7. Record details of our assessment, the controls in force and additional measures planned.
8. Make sure that Managers and Supervisors understand the policy and procedure. Consider whether they need any training.
9. Explain these arrangements to the workforce. Ensure they are understood and provide further training where necessary.
10. Implement the policy and procedures and ensure that it is followed in practice.
11. Monitor and review the operation of the policy and procedure from time to time and following any case of injury or ill health caused by aggression or violence at work, making changes to the procedure identified as necessary or beneficial.

Further advice and information on work related aggression and violence can be found in Guidance Note 5-19.

## **WORK WITH CHILDREN**

We have a duty to protect our workforce and others from the risks created during work with children.

We do this by;

- Nominating senior staff members to identify hazards and risks and manage work with children safety.
- Assessing the risks created by work with children.
- Developing and implementing control measures, procedures and Safe Systems of Work.
- Ensuring that the management of the policy, procedures, Safe Systems of Work and control measures relating to work with children are undertaken by competent, trained personnel.
- Providing and using safe play equipment and where required personal protective equipment.
- Ensuring that risk assessments are completed by competent, trained personnel.
- Providing and recording relevant training.
- Monitoring and reviewing our systems; using our experience of operating these arrangements we aim to make improvements to the way we manage the risks associated with work with children.

The personnel responsible for the above measures are identified within the Responsibility Table of our Health and Safety Policy.

## WORK WITH CHILDREN

### Action Plan

**To protect children and our workers from the hazards of work with children we need to:**

1. Assess the work involved and identify areas where children and others could be harmed.
2. Identify the control measures already in place and any additional measures that may be required.
3. Consider;
  - a. Play equipment – is it suitable and regularly maintained?
  - b. Facilities (toilets etc.) – are they safe, clean and well-maintained?
  - c. Biological hazards from contact with bodily fluids or children with infectious conditions.
  - d. Accidents and illness in children – procedures for dealing with this, contacting parents, emergency assistance etc.
  - e. Any food consumed – is it safely stored?
  - f. Potential for verbal or physical abuse from parents and guardians and children.
  - g. Preparation of food – is it carried out safely?
  - h. Hazards involved in maintenance and cleaning.
4. Keep a written record of significant risk assessments and the control measures and systems of work adopted.
5. Make sure that relevant Managers and Supervisors understand the procedures and arrangements. Consider whether they need any training.
6. Implement the procedure and ensure it is followed in practice.
7. Monitor and review the operation of this procedure from time to time and whenever an incident occurs, make changes to the procedure identified as necessary or beneficial.

Information and advice on the control of risks from work with children can be found in Guidance Note 6-14.



## EDUCATIONAL VISITS

We have a duty to protect our workforce and others from the risks created on educational visits.

We do this by;

- Nominating senior staff members to identify hazards and risks and manage the safety of educational visits.
- Assessing the risks created by educational visits.
- Developing and implementing control measures, procedures and Safe Systems of Work.
- Ensuring that the management of the policy, procedures, Safe Systems of Work and control measures relating to educational visits is undertaken by competent, trained personnel.
- Ensuring any educational and play equipment on sites visited is safe to use.
- Ensuring that risk assessments are completed by competent, trained personnel.
- Providing and recording relevant training.
- Monitoring and reviewing our systems; using our experience of operating these arrangements we aim to make improvements to the way we manage the risks associated with educational visits.

The personnel responsible for the above measures are identified within the Responsibility Table of our Health and Safety Policy.

## EDUCATIONAL VISITS

### Action Plan

**To protect children and our workers from the hazards of educational visits we need to:**

1. Assess the proposed visit and identify areas where children and others could be harmed.
2. Identify the control measures already in place and any additional measures that may be required.
3. Consider;
  - a. Issues regarding parental permission and approval of the visit from the Local Education Authority (where applicable).
  - b. Safety rules for children to adhere to on visit site (agreed in liaison with site staff).
  - c. Safety of travel arrangements to and from the proposed site.
  - d. Number of accompanying staff in ratio to number of children attending – are staff numbers sufficient?
  - e. Possibility of contracting infectious diseases on proposed site.
  - f. Ground and weather conditions which may possibly be encountered.
  - g. Risks of water-based activities.
  - h. Possibility of contact with electrical equipment and different forms of machinery.
  - i. Possibility of contact with hazardous substances, e.g. pesticides and animals.
  - j. Overseas visits will require more in-depth consideration.
4. Keep a written record of significant risk assessments and the control measures and systems of work adopted.
5. Make sure that relevant senior members of staff understand the procedures and arrangements. Consider whether they need any training.
6. Implement the procedure and ensure it is followed in practice.
7. Monitor and review the operation of this procedure from time to time and whenever an incident occurs, make changes to the procedure identified as necessary or beneficial.

Information and advice on the control of risks from educational visits can be found in Guidance Note 6-15.